

Language Wiki

Developed by Cat Kutay at Biambul Indigenous Language Business Institute with funding from Department of Aboriginal Affairs and DCITA Language Maintenance Grant. Contact ckutay@cse.unsw.edu.au. Ph 0418 455 089.

Sound files developed by George Fisher - buralinga@optusnet.com.au

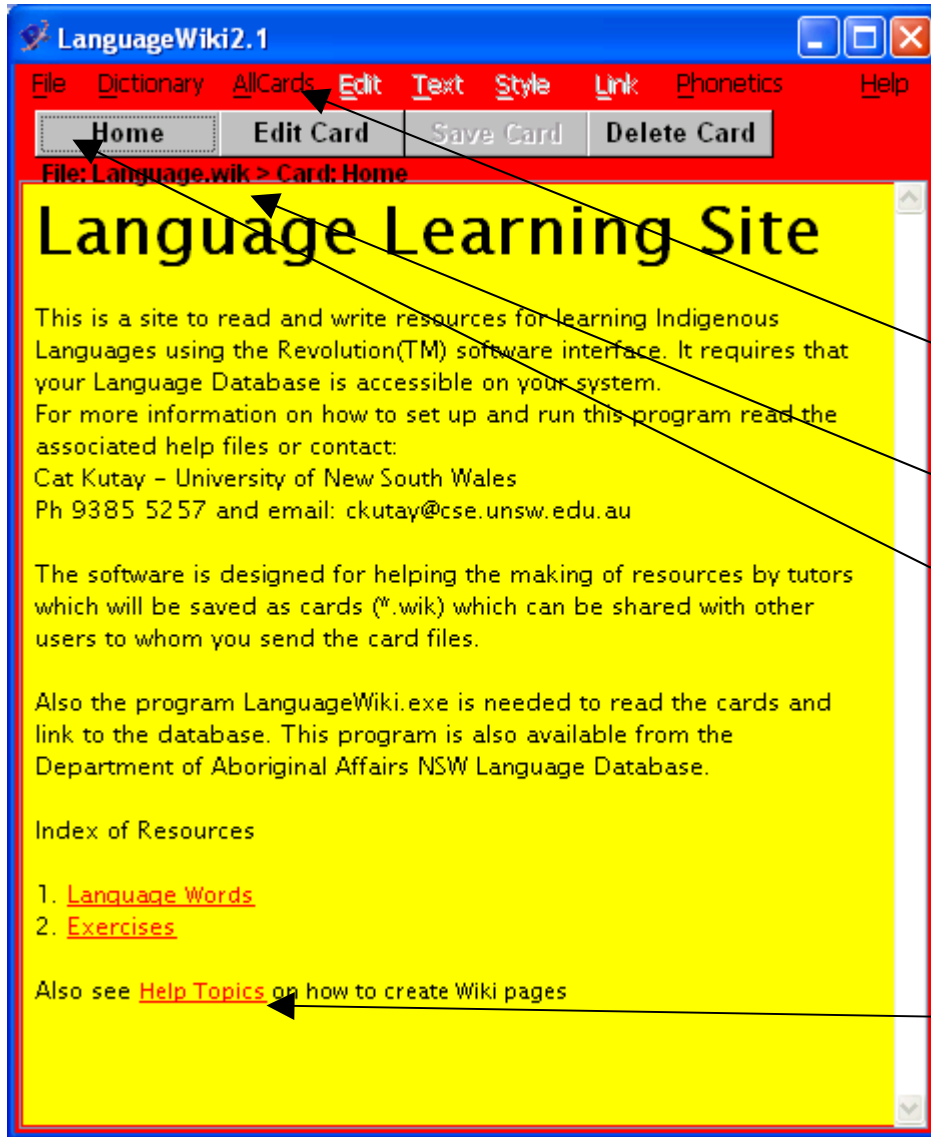
This program is developed as a language teaching assistant. The program runs on a PC and accesses either a local database, or can use the databases stored on web sites such as the ones being developed by the Department of Aboriginal Affairs, NSW Language Research and Resource Centre.

The software is used by teachers to write worksheets which students can use to interact with the language knowledge stored as words and sound files in the database and the grammar stored in a language parser. The software is designed for teachers who are also reclaiming their language and so includes support for finding words, grammatical checking and options to enter words in the database.

The software demonstrated here is using a Wiradjuri database set up by Christopher Kirkbright. It is a large database which is used in Sydney schools where Wiradjuri is being taught.

For more information and regular updates, see the website <http://www.SALC.org.au/>

Student Mode



There are two 'profiles' or modes in which the software can be used. The first is the student mode, where students can read and respond to items put up by the teacher

All cards – is a list of the other pages you can view

The name of the File you are looking at is here- **Language.wik**

Home button allows you to return to the first page of the set of pages.

If you click on a word that is **red and underlined** it will open a new page of the file in this window

The other menus are:

File	Dictionary	AllCard
New...		Ctrl+N
Open...		Ctrl+O
Exercise...		Ctrl+E
Save		Ctrl+S
SaveAs...		
Quit		Ctrl+Q

File Menu

Open new set of pages

Open old saved set

Exercise – open file in exercise window

Save the files (including all pages)

Save the files as a new name

Quit – quit this window

Dictionary	AllCards
Query Language_Word	Ctrl+A
Query English	Ctrl+E
Query Word_Part	Ctrl+W

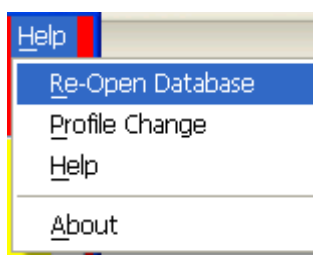
Dictionary Menu searches words directly from database

Select what sort of word you are looking for. The information will be shown in the **LanguageDisplay** window.

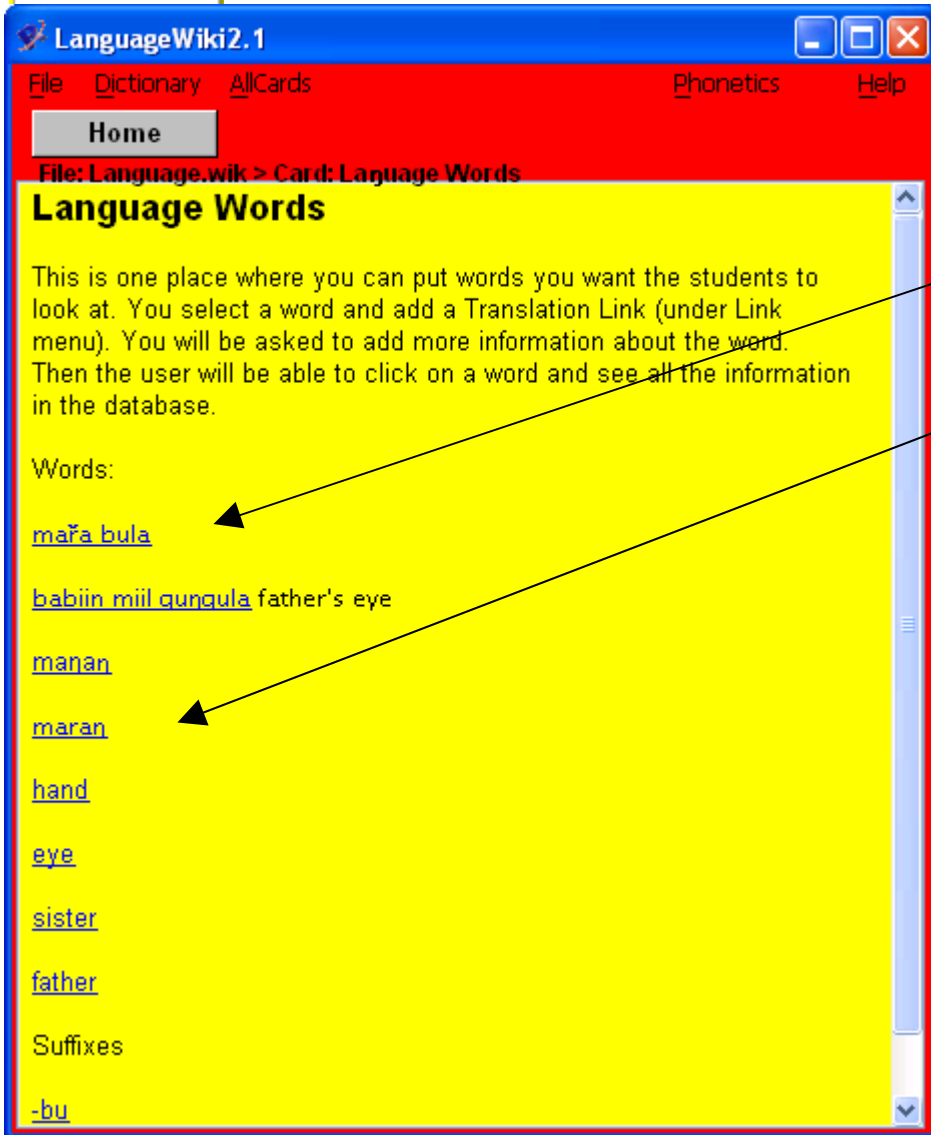
The Word_Part search is rather large at present, but can be tailored to people's needs.

Phonetics	
ng	Ctrl+1
ny	Ctrl+2
nh	Ctrl+3
dy	Ctrl+4
dh	Ctrl+5
rr	Ctrl+6
ii	Ctrl+7
ay	Ctrl+8
aay	Ctrl+9

Phonetics can be entered in the pages or search using the Control key and the number that matches the phonetic



Help to Reconnect to database-gives default values
Change to other profile
Read Help files



The second page called "Language Words" from the file Language.wik shows the following.

Here you can see some words, in English and in language.

If you click on a word that is **Blue and underlined**, it comes up in a new window called **LanguageDisplay** with all the information about that word in the database.

The third page is the **Exercises** list

LanguageWiki2.1

File Dictionary AllCards Edit Text Style Link Phonetics Help

Home Edit Card Save Card Delete Card

File: Language.wik > Card: Exercises

Exercises

The first exercise in the Introduction deals with Phonetics of the Language, so look at this first. It is best to then follow the exercises in the order below.

Series of Exercise are:

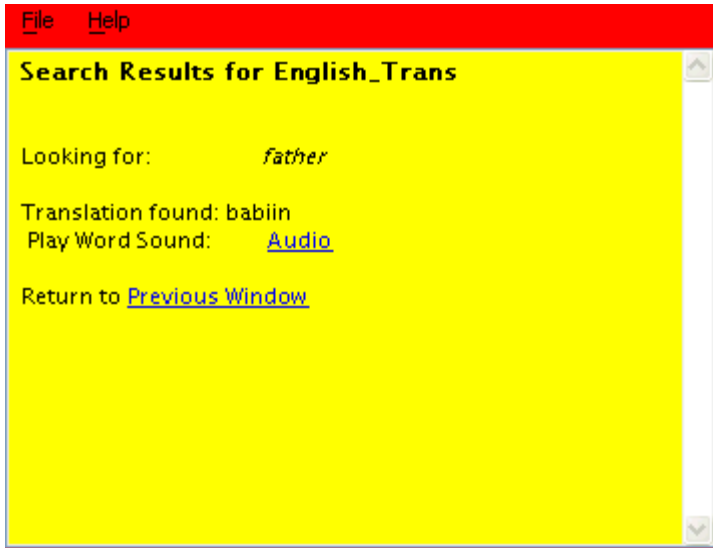
1. [Body and Family](#)
 - 1.1 Phonetics
 - 1.2 Head, Shoulders, Knees and Toes
 - 1.3 Family
2. [Songs](#)
 - 2.1 Kookaburra sits in the old gum tree

Return to [Home](#)

This is an optional list of exercises that are linked to this Language.wik file, or the set of exercises that the teacher has written so far.

If you click on a linked exercise, the **green and underlined links**, an exercise window **Exercise** opens with that page or file showing.

LanguageDisplay



This window shows the information stored in the database, in response to a **Dictionary** or **Linked Search**.

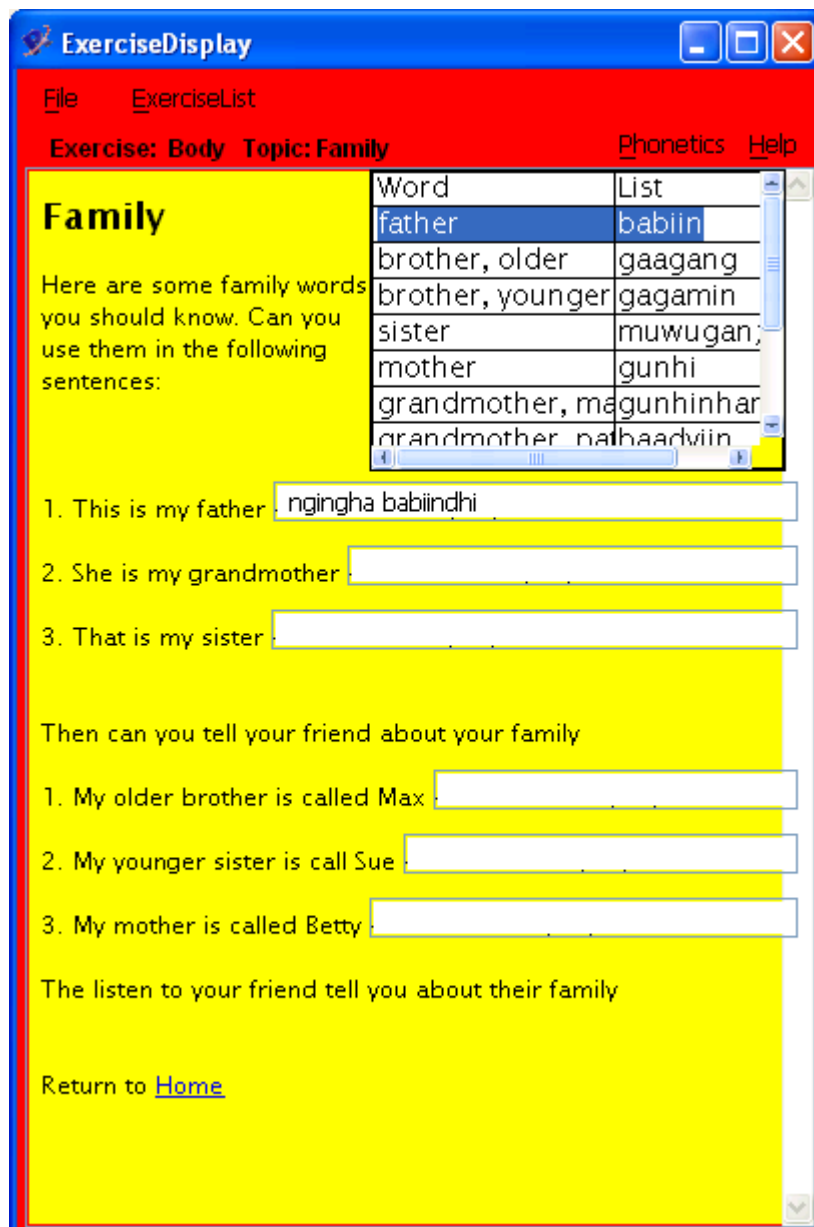
If you search for more than one word at a time the software uses a grammatical parser to provide a translation

Audio:

If an audio file exists, it will be shown as a link to click and play

Again if you search for more than one word, you will get a sound file that is a combination of the words you searched, if they are there.

Exercise Display

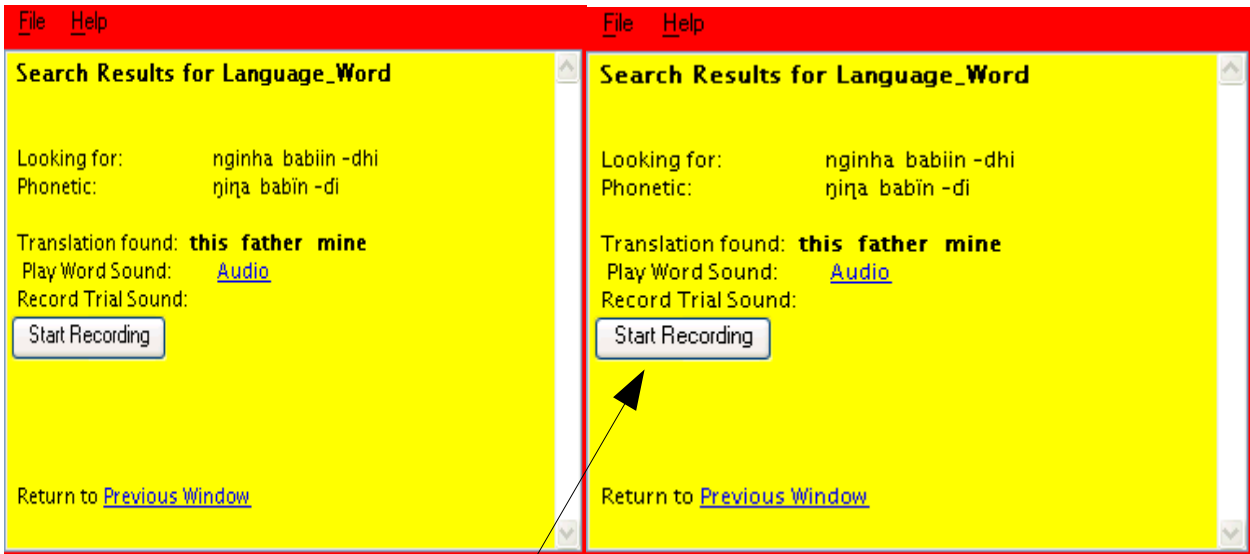


This window is the most interactive. The exercises have been written by tutors. They include a word list, links to songs and videos and answer boxes. If a student enters an answer in the box, and hits return, the LanguageDisplay screen shows the translation of their attempt.

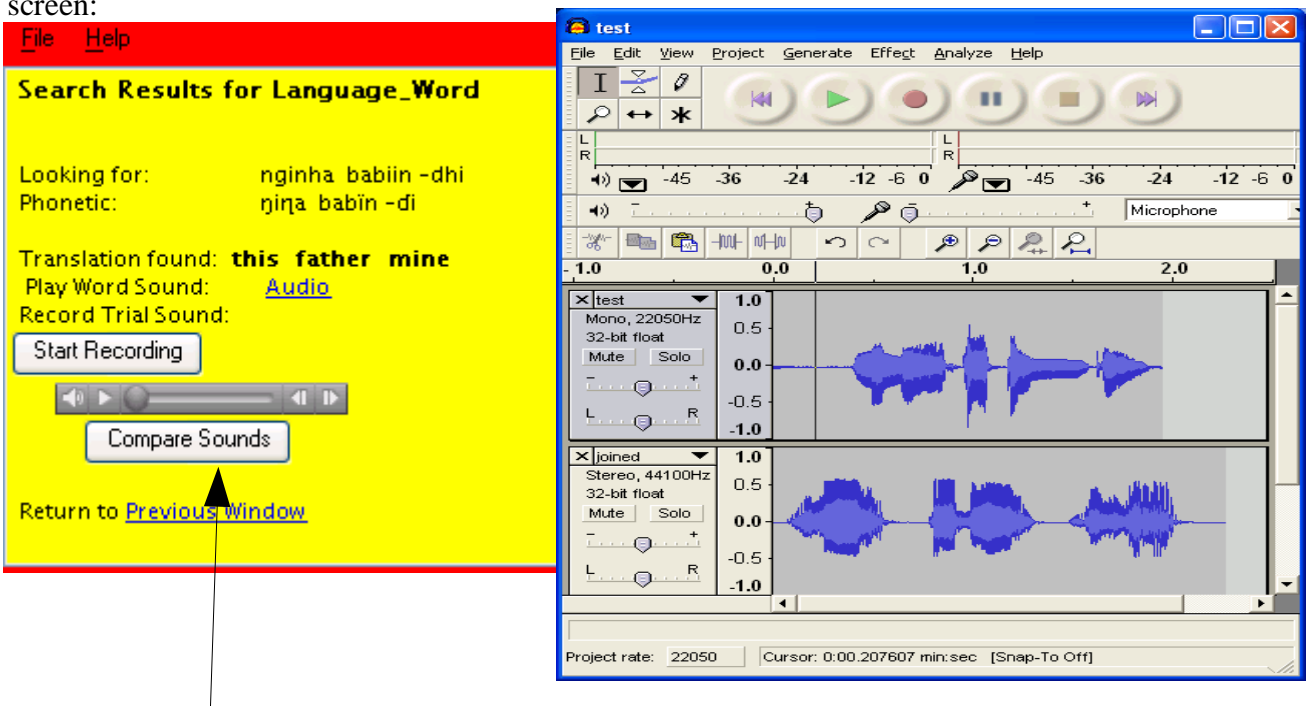
This is the parsed version of the attempt above

For teacher

For student:



The difference is the teacher can listen to the audio, but the student can record their own audio. If they select the “Start Recording” button (and stop recording when they finish), they then get this screen:

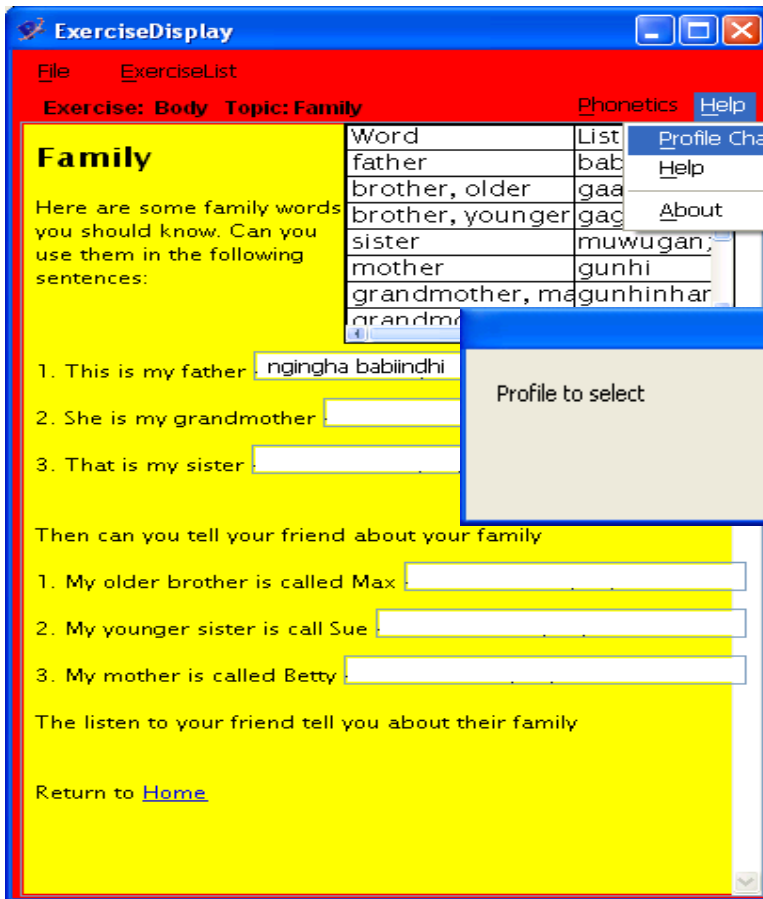


If they select “Compare Sound” they will see the audacity screen example to the right. This gives them some visual comparison of their sound to the native speakers recording.

If there is no recording, this option does not come up

At any time you can now use the Help menu to change to Teacher Profile (see next page)

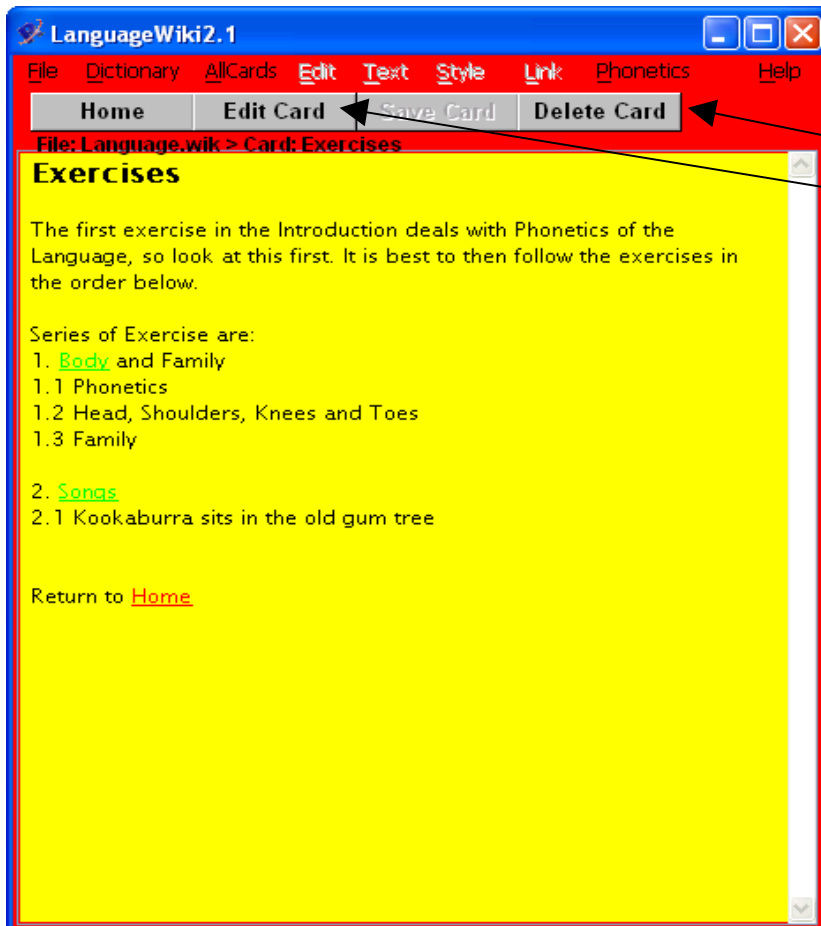
Profile Change



There are two profiles, Teacher and Student. At present the software makes it easy to change between the two, but this will be removed in later versions.

You select Profile Change in the Help menu and get this option:

Teacher Mode



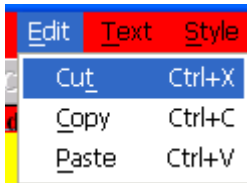
Now you are teacher and can edit and make new pages or "cards"

The new buttons are to **Edit** and **Delete** cards or pages

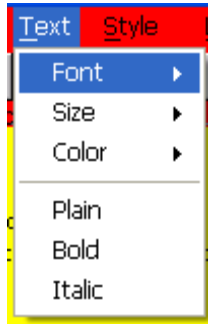
When you select **Edit**, and you are in edit mode, you get the new menus shown below.

Menus:

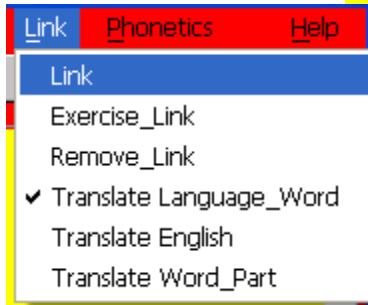
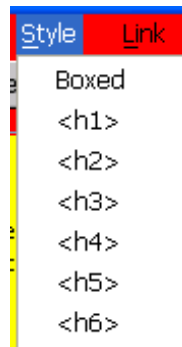
Edit to edit selected text



Text to set text style of selected text



Style to set style of selected text



Link to select the type of link you are adding

A Link is a new Page

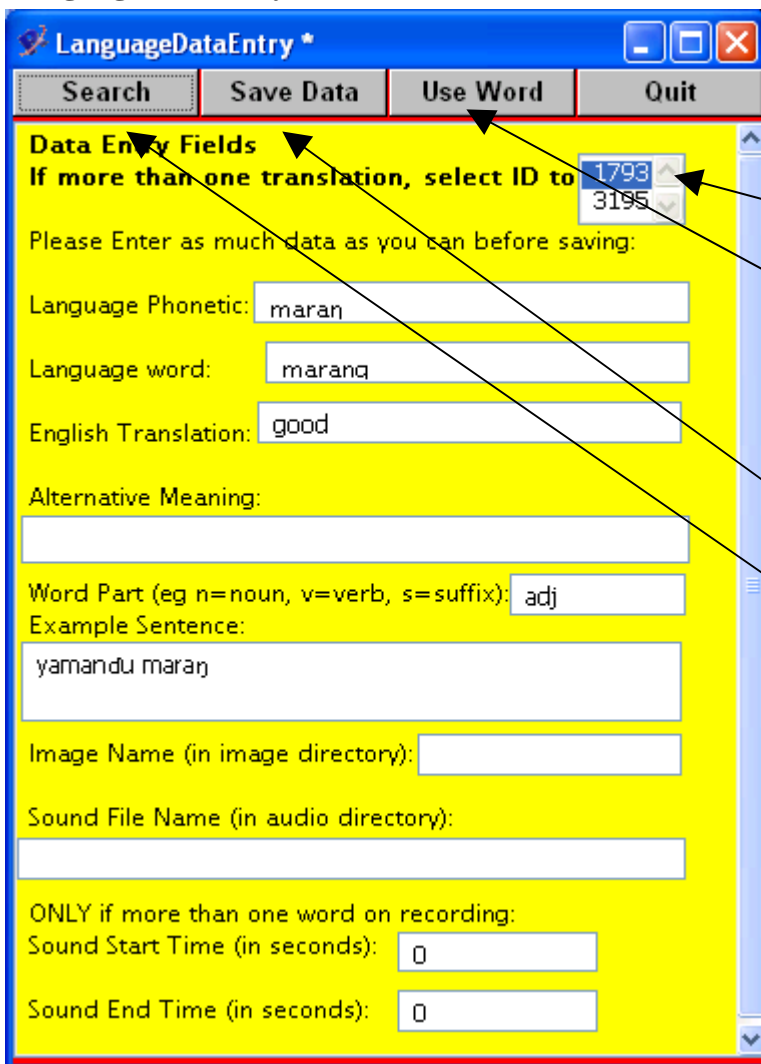
An Exercise Link opens a new page in **ExerciseDisplay**

Remove an old link

A translation link opens in the **LanguageDisplay** Window

You need to say which category the word is in.

LanguageDataEntry



When you add a Translation link, a new window, the **LanguageDataEntry** window opens

This allows you to add data to the database.

If there are more than one such word already existing in the database, an **ID list** will be shown. Select on the **ID** in the list to view or save each option.

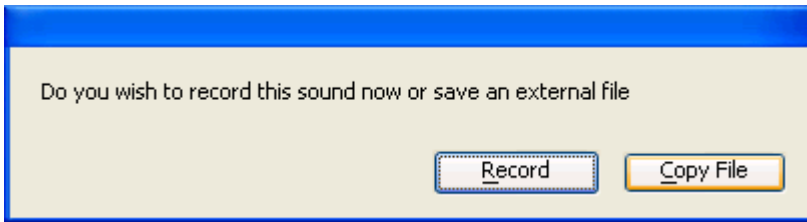
If you just want to use it in a wordlist in the **ExcerciseDisplay**, select **Use Word**

When you want to save the data select **Save Data**

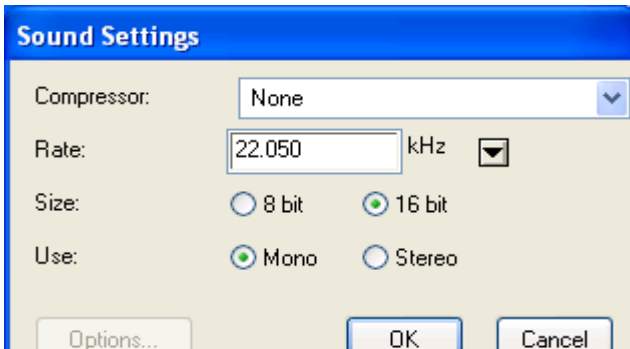
If you want to check if there is another word that contains this word, select **Search**

other wise you can **Quit**

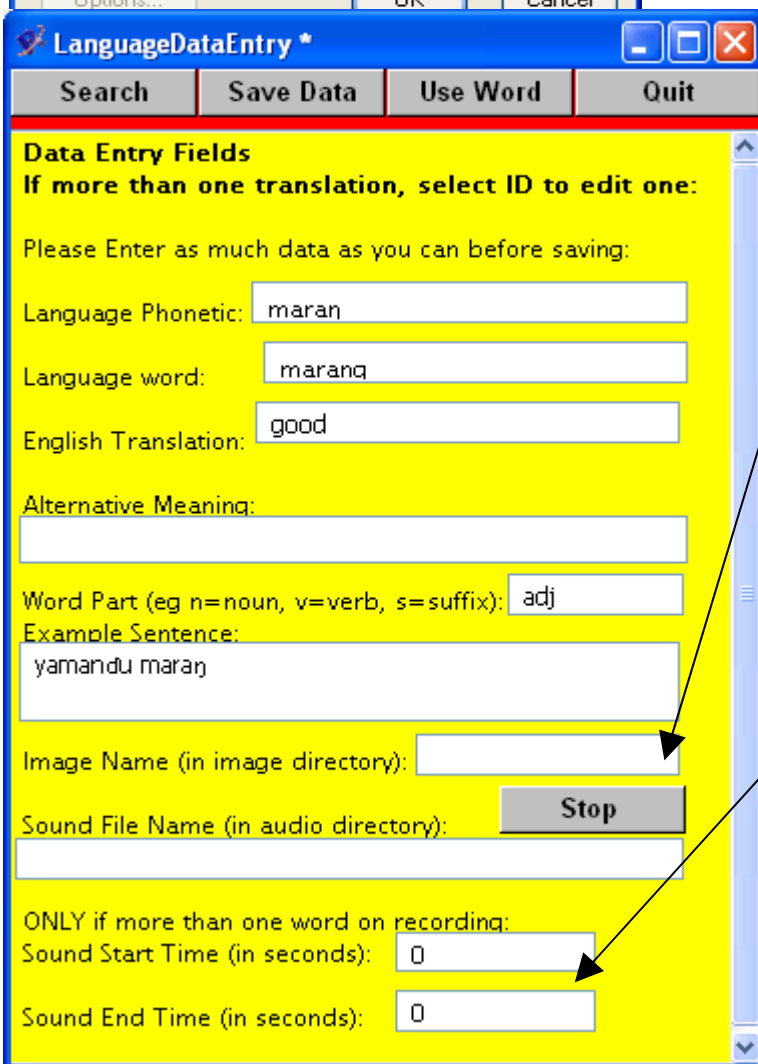
If you add a sound file name you are asked if you want to record the sound, or copy the file from somewhere on your computer.



Type the Sound File name and return, then this window comes up s



If you ask to record, the first time, you set up the recording properties. You can just leave these are they are and select "OK"

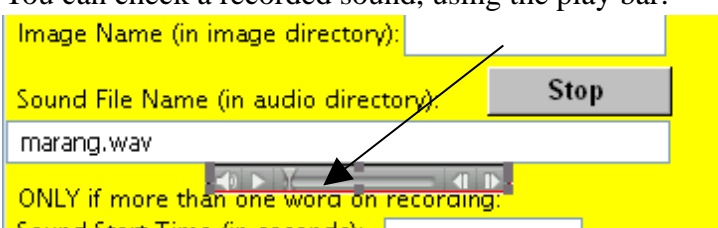


The Software will start recording when the "Stop" button shows. It will record your sound, and stop when you select the stop button.

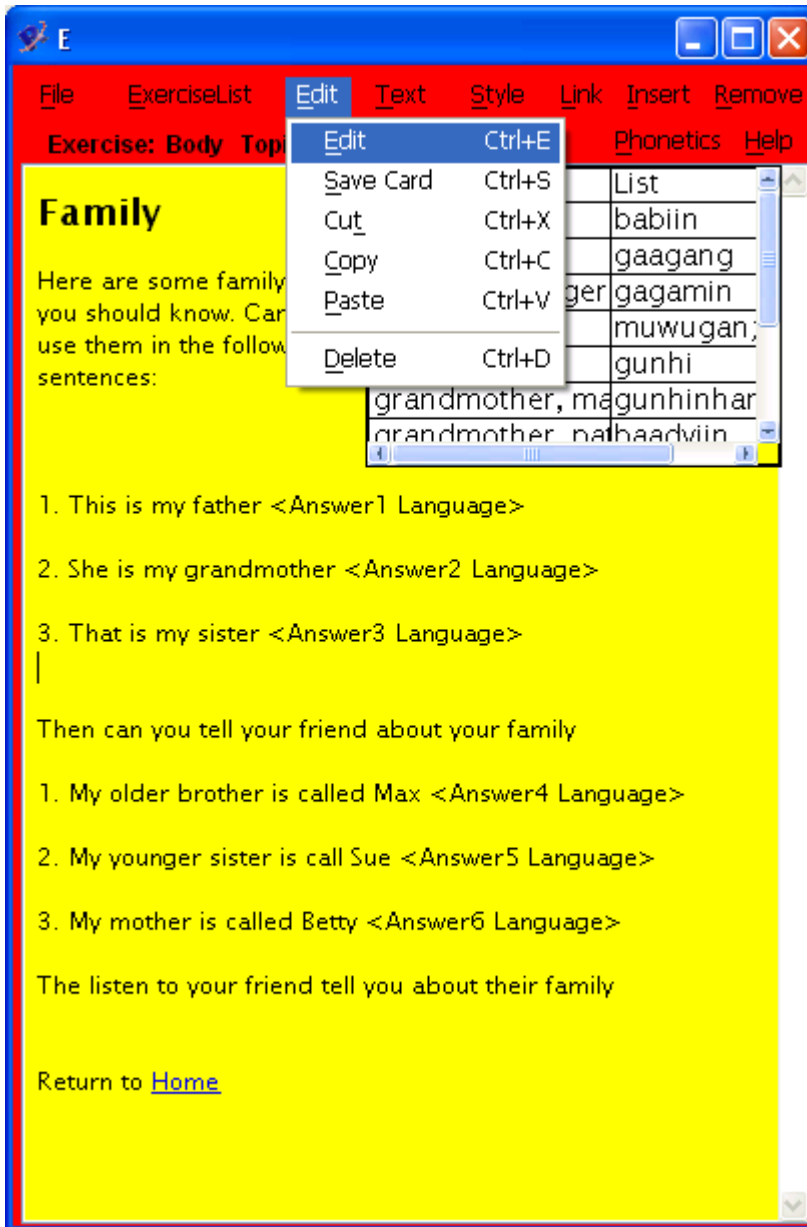
The sound will then be saved in a file that is linked to the word data. If you save this in the database, with "Save Data" then it will be permanently stored on you PC with the program.

If you copy another file with many words in it, you can set the start and stop time for the word you want, using the last two fields.

You can check a recorded sound, using the play bar:



Finally, the **Exercise Display** page as teacher has more options.



The **Edit** menu allows you to start editing, and save card.

The Cut, Copy and Paste as before in the **LanguageWiki** window

The Text, Style and Link, Phonetic and Help menu are the same as in the **LanguageWiki** window too.

The new buttons are to **Insert** and **Remove** exercise features.

Menus

Insert	Remove
AnswerBox	Insert an Answer Box . Not in teacher mode this is just a line of text, with the English or Language for the response language expected.
Picture	Insert a Picture . To move the Picture use the right hand mouse
Table	Insert a table Word List
Sound	Link a Sound file
Video	Link a Video

Remove is the same list for removing these items, except for “**Answer Box**” you are advised to just remove the text yourself

That is the main features. If you can suggest any we should include, please tell the presenters.